



**GAJJAR<sup>®</sup>**  
**DIE CAST & ENGINEERS**

SPARES FOR SIZING & WARPING MACHINES

TARGETED PRECISION  
**DECISIVE RESULTS**



# COMPANY OVERVIEW

We, the Gajjar Die Cast & Engineers manufacturers of Aluminum Components, Spares for Sizing & Warping Machines, Precision Spares, Product Designing, Vertical Machining Centre Jobwork, Pressure & Gravity Die Casting Dies and Injection Moulds for plastic articles. Since the inception, our products have been satisfying the needs of customers across the world in industries like Engineering, Textiles, Auto, Lighting and many more. In the business, our prime objective is to leave a lasting impression of our quality in the minds of our esteemed clientele. We have set our priorities to institutionalize continuous improvement in Production, Quality, Marketing, Sales, Logistics and finally on Export Activities so as to enable us to improve the quality of the products as a whole. At Gajjar Die Cast & Engineers, prime importance is technology that changes the business environment radically and new business model that alters the whole dynamics of customer service and satisfaction.

Registered Member of



We use licence version of



## Our Services

- ▶ Aluminium Components
- ▶ Spares for Sizing & Warping Machines
- ▶ PTFE Precision Parts
- ▶ Engineering Plastic Parts with Injection Moulds
- ▶ Precision Spares
- ▶ Product Designing
- ▶ Substitute of Import Spares
- ▶ We develop and manufactures spares as per your sample or requirement with material implementation
- ▶ Spares for Picanol Rapier Loom

**We have tool room machineries in our workshop. Haas (USA) make VMC machines with latest measuring instruments.**



**Model TM3P**  
(10 Tool ATC)



**Model VF2-SSYT**  
(24 Tool ATC)



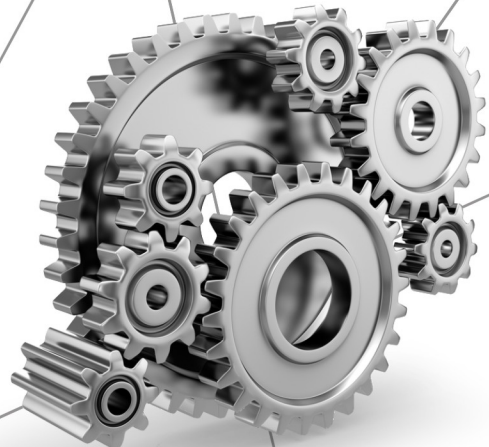
### Director's Message

Mr. Paresh Gajjar

It's our endeavour to be one of the most competitive companies in the industry with emphasis on efficiency in operations, reliability for customers and trust on total customer satisfaction. Gajjar Die Cast & Engineers is the result of unique combination of strong management team, dedicated workforce and experienced professionals and lead by a common vision to establish a company that can provide unique specialized services to satisfy its customers.



JAS-ANZ

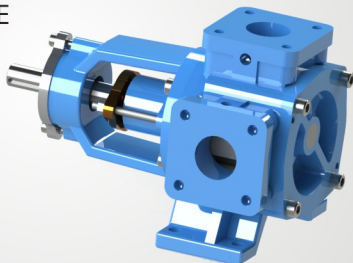




# SPARES FOR PRO SIZING MACHINE

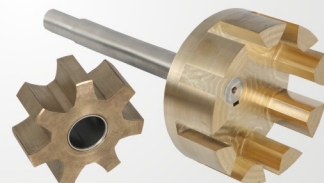
## GD-204

SIZE CIRCULATION PUMP FOR  
PRO-SIZING MACHINE  
E-400  
SIZE INLET - 2"  
OUTLET - 2"  
MATERIAL S.S. 316



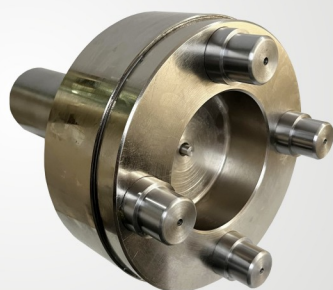
## GD-204/C

GEAR SET FOR E-400  
SIZE CIRCULATION PUMP  
ONE DRIVEN GEAR  
WITH SHAFT  
ONE IDLER GEAR  
WITH BUSH,  
02 NOS OIL SEAL  
IDLER GEAR PIN



## GD-PRO-129

ASSEMBLY BEAM  
PULLING SPINDLE  
DRIVE SIDE



## GD-PRO-129/AA

ASSEMBLY BEAM  
DRIVE SPINDLE  
DRIVEN SIDE



## GD-053-PRO

BAKELITE HANDLE FOR  
SIZING MACHINE CREEL



## GD-00190-PR

BRAKE LINER ASSY. WITH CYLINDER  
MOUNTING LEVER FOR  
BEAM SUPPORT ASSY.  
( PRO SIZING )



## GD-0190-C

CYLINDER MOUNTING LEVER  
FOR BEAM SUPPORT ASSY.  
( PRO SIZING )





## GD-190-A

BRAKE LINER MOUNTING PLATE  
FOR BEAM SUPPORT  
ASSY. OF PRO  
SIZING MACHINE



## GD-190-B

BRAKE LINER FOR BEAM SUPPORT  
ASSY. OF PRO SIZING MACHINE



## GD-126

BRAKE LINER WITH MOUNTING PLATE  
BEAM SUPPORT ASSY.  
( PRO SIZING )



## GD-00112-PR

CYLINDRICAL ROLLER FOR  
PRESS ROLLER ASSY.  
MAT. PA6C- MADE  
IN GERMANY



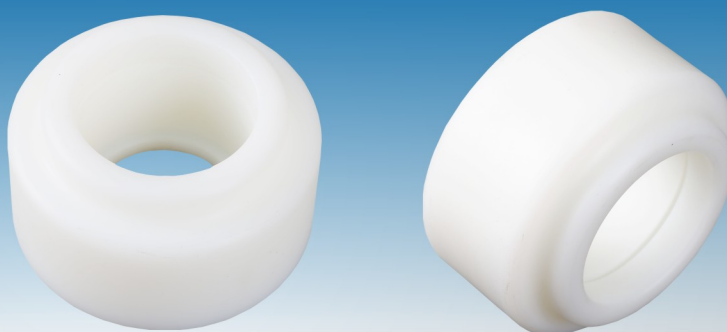
## GD-BAR-51

BEAM ALIGNMENT ROLLER  
FOR SIZING MACHINE CREEL  
MAT. PA6C- MADE IN GERMANY



## GD-BSR-52

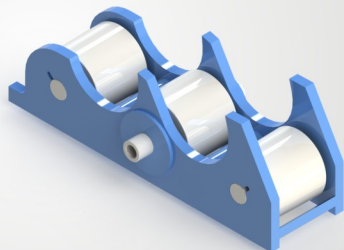
BEAM SUPPORT ROLLER FOR  
SIZING MACHINE CREEL  
MAT. PA6C- MADE IN GERMANY



# SPARES FOR PRO SIZING MACHINE

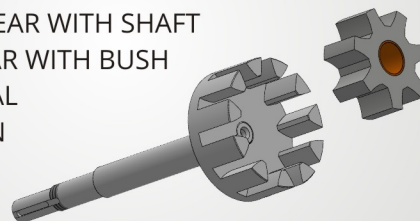
## GD-PRO-150

ROLLER CARRIER  
ASSEMBLY  
FOR PRESS ROLL



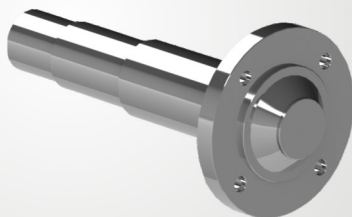
## GD-205/C

GEAR SET FOR VARISCO V50-3  
SIZE CIRCULATION PUMP  
ONE DRIVEN GEAR WITH SHAFT  
ONE IDLER GEAR WITH BUSH  
02 NOS OIL SEAL  
IDLER GEAR PIN



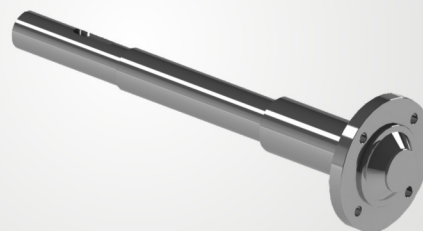
## GD-PR-451

ROLLER SHAFT- DRIVEN SIDE  
FOR PRO SIZE SIZING MACHINE



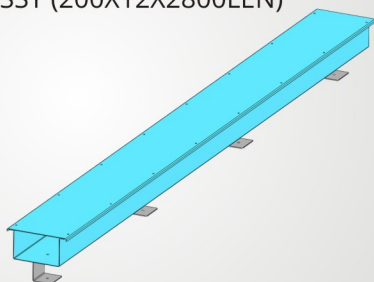
## GD-PR-452

ROLLER SHAFT-FEED ROLLER DRIVE SIDE  
FOR PRO SIZE SIZING MACHINE



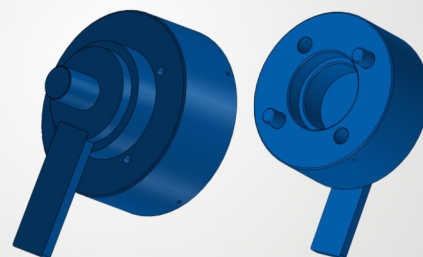
## GD-PRO-CAB-005

CABLE CHANNEL ASSY (200X12X2800LEN)  
MATERIAL S.S. 304



## GD-PRO-125

SUDAKOMA ADAPTOR FOR LETUP



## GD-091/S-650

SIPHON PIPE FOR SMALL DRYING  
CYLINDER APRO.  
LENGTH-650 M.M.  
1/4" BSP THREAD  
MATERIAL S.S. 316



## GD-091/S-1500

SIPHON PIPE FOR BIG DRYING CYLINDER  
APRO. LENGTH-1500 M.M.  
1/2" BSP THREAD  
MATERIAL S.S. 316



## GD-PRO-CY-50-40

PNEUMATIC CYLINDER (SPRING RETURN)  
FOR PRO SIZING MACHINE CREEL



## SLPBS3B2-LIMIT SWITCH

LIMIT SWITCH FOR  
PRO SIZING MACHINE



## XCSZC7905

TELEMECANIQUE LIMIT SWITCH WITH  
CABLE FOR PRO SIZING MACHINE



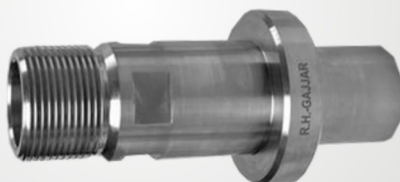
## GD-H-332 L.H. | GD-H-332 R.H.

ROTARY JOINT  
SIZE: 1 1/4"  
MATERIAL S.G. IRON  
MAKE-GAJJAR



## SS SHAFT-H332 LH / H332 RH

S.S. SHAFT ( NIPPLE ) FOR ROTARY JOINT  
H-332-L | H-332-R



## CARBON SPACER-H332

CARBON SPACER-H332  
SIZE:  
DIA: 65.70 MM  
ID: 40.00 MM  
THICKNESS : 40.00 MM



## CARBON SLEEVE-H332

CARBON SLEEVE-H332  
DIA: 68.00 MM / ID: 48.00 MM  
THICKNESS  
16.10 MM



## CARBON RING-H332

CARBON RING-H332  
DIA: 53.00 MM / ID: 45.00 MM  
THICKNESS  
14.00 MM



## GD-0024-CON-PRO

CONICAL COUPLING  
FOR 24 TEETH SPROCKET



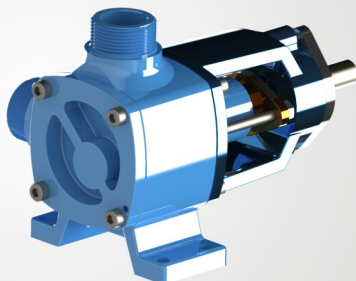


## SPARES FOR ROTAL SIZING MACHINE

### GD-201

SIZE CIRCULATION  
PUMP (E-320)

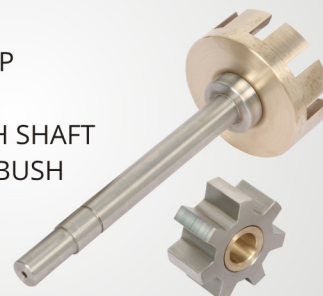
MATERIAL S.S. 316  
SIZE:  
INLET 1½"  
OUTLET 1½"



### GD-201/C

GEAR SET FOR E-320  
SIZE CIRCULATION PUMP

ONE DRIVEN GEAR WITH SHAFT  
ONE IDLER GEAR WITH BUSH  
02 NOS OIL SEAL  
IDLER GEAR PIN



### GD-00076-CYD-ROT

76 TEETH X ¾" INCH PITCH  
SIMPLEX SPROCKET  
FOR CYLINDER DRIVE



### GD-0024-DUP-SPR

24 TEETH X ¾" INCH  
PITCH DUPLEX  
SPROCKET



### GD-0024-SPR

24 TEETH X ¾" INCH  
PITCH SIMPLEX  
SPROCKET



### GD-0024-SPR-CON

24 TEETH X ¾" INCH PITCH  
SIMPLEX SPROCKET WITH  
CONICAL HOLE



### GD-0024-CON-ROT

CONICAL COUPLING  
FOR 24 TEETH SPROCKET



### GD-00190-CL

06 NOS. BRAKE LINER WITH  
NATA ROLLER CHAIN

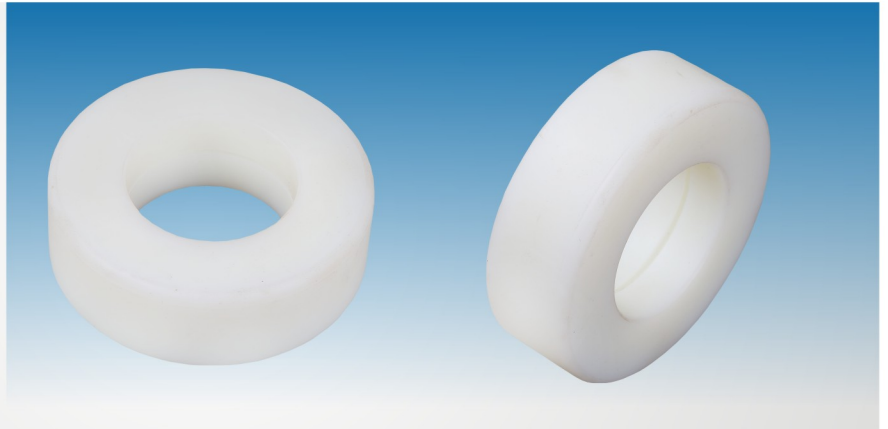
AND HOOK BOTH SIDE.  
FOR SIZING  
MACHINE CREEL



### GD-BAR-51

BEAM ALIGNMENT ROLLER FOR  
SIZING MACHINE CREEL

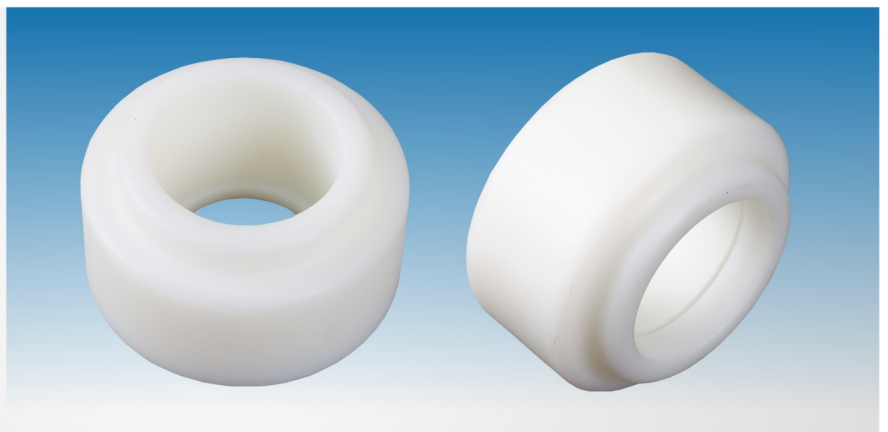
MAT. PA6C- MADE IN GERMANY



### GD-BSR-52

BEAM SUPPORT ROLLER FOR  
SIZING MACHINE CREEL

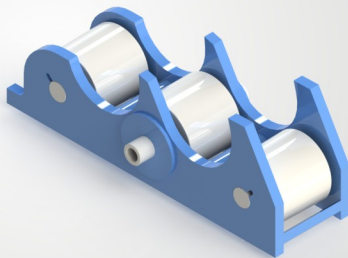
MAT. PA6C- MADE IN GERMANY



### GD-ROT-150

ROLLER CARRIER ASSEMBLY

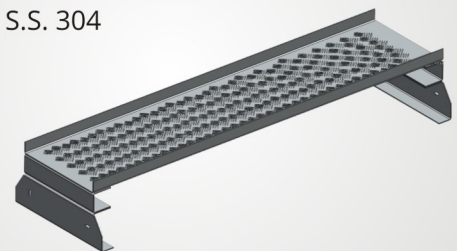
FOR PRESS ROLL



### GD-ROT-PLA-0012

PLATFORM

MATERIAL : S.S. 304



### GD-ROT-CY-32-50

PNEUMATIC CYLINDER FOR  
SIZING MACHINE CREEL



## SPARES FOR ROTAL SIZING MACHINE

### GD-0053-ROT

BAKELITE HANDLE FOR SIZING MACHINE  
CREEL



### GD-190

BRONZE FILLED BRAKE LINER FOR  
SIZING MACHINE CREEL



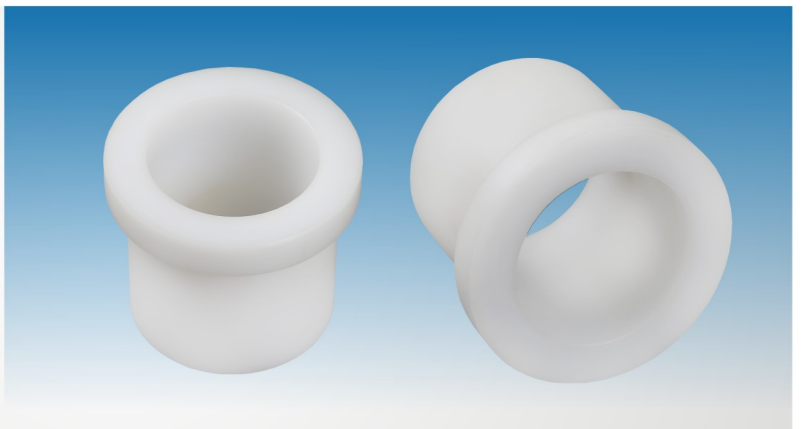
### GD-00089-SPI

MODIFIED PERMANENT DIAPHRAGM  
KIT FOR STEAM CONTROL VALVE



### GD-00505-A

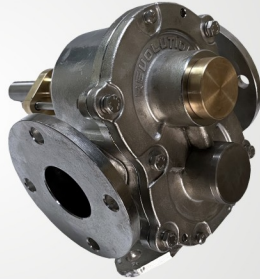
CENTRE BUSH FOR UNWINDING MACHINE  
MAT. POM-C  
MADE IN GERMANY





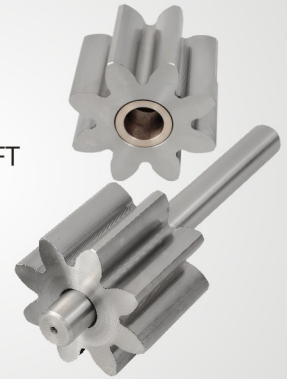
## GD-101

SIZE CIRCULATION PUMP  
FOR SAW BOX OF  
BENNINGER  
SIZING MACHINE  
SIZE- INLET 2" X OUTLET 2"  
60 L.P.M.  
MATERIAL - S.S.316



## GD-101-C

GEAR SET FOR SIZE  
CIRCULATION PUMP  
01 GEAR WITH DRIVEN SHAFT  
01 IDLER GEAR WITH  
BRONZE BUSHES  
MATERIAL - S.S.316



## GD-101A

SPEED REDUCE GEAR BOX  
FOR SAW BOX  
SIZE CIRCULATION PUMP



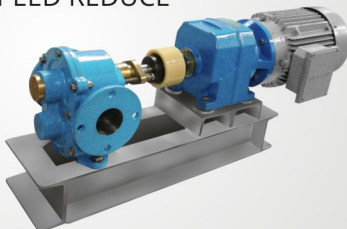
## GD-101AA

SPEED REDUCE GEAR BOX  
WITH SIEMENS MAKE  
ELE MOTOR 1440  
R.P.M. 2.2 K.W.



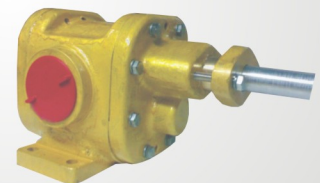
## GD-151

SIZE CIRCULATION PUMP UNIT  
(ASSEMBLED WITH SPEED REDUCE  
GEAR BOX, GEAR  
COUPLING & ELE.  
MOTOR, STAND)



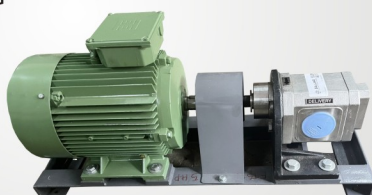
## GD-114

COOKING PUMP  
MATERIAL PHOSPHOROUS BRONZE  
SIZE:  
INLET - 2" X OUTLET - 2"



## GD-114/AA

SIZE TRANSFER PUMP  
UNIT ASSEMBLED WITH ELECTRIC  
MOTOR, COUPLING  
& BASE STAND  
MATERIAL S.S. 316  
INLET - 2"  
OUTLET - 2"



## GD-SZ-50

SIZE TRANSFER PUMP  
INLET - 2"  
OUTLET - 2"

MATERIAL S.S. 316



# SPARES FOR BENNINGER SIZING MACHINE

## GD-205

SIZE TRANSFER PUMP  
FOR SINGLE YARN  
SIZING MACHINE  
MATERIAL S.S. 316  
SIZE: G ½"



## GD-102

17 TEETH X 1" PITCH  
DUPLEX SPROCKET  
( CYLINDER DRIVE)



## GD-103

57 TEETH X 1" PITCH  
DUPLEX SPROCKET  
FOR CYLINDER DRIVE



## GD-103/A

55 TEETH X 1" PITCH  
DUPLEX SPROCKET  
FOR CYLINDER DRIVE



## GD-170

PHOSPHOROUS BRONZE NUT  
FOR HEAD STCOK  
ARMOUR SHAFT



## GD-105

HEIGHT ADJUSTMENT SCREW  
WITH WORM WHEEL  
FOR IMERSION ROLL  
MAT. BRASS  
AND S.G. IRON



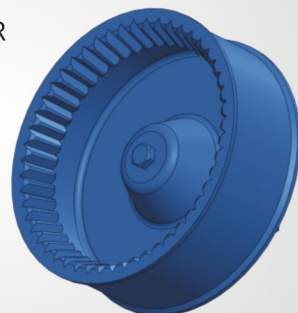
## GD-105/A

LONG HELICAL GEAR  
FOR IMERSION ROLL  
GEAR BOX



## GD-106

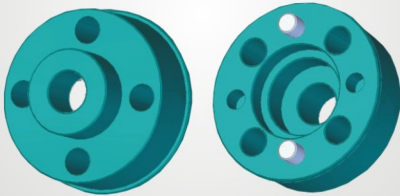
50 TEETH BEAM ADAPTOR  
WITH SQUARE  
HUB 55-45-40 MM





## GD-173

ADAPTOR FOR  
SUDAKOMA BEAM



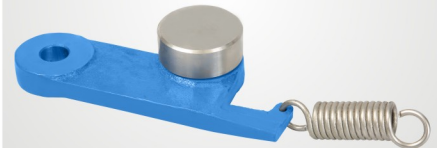
## GD-155

50 TEETH SUDAKOMA ADAPTOR  
FOR SIZING MACHINE



## GD-BESZ-075

LEVER WITH S.S. BUSH AND  
SPRING FOR SQUIZ ROLL



## GD-107

NYLON GEAR COUPLING  
FOR GEAR BOX  
AND SIZE PUMP  
COUPLE  
BOTH SIDE  
HOLE-25.00 M.M  
8M.M. X4 M.M. KEYWAY



## GD-BS-EC-100610

ENCODER COUPLING EC

HOLE 6 X 10M.M.



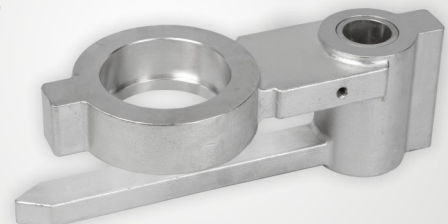
## GD-BS-PU-300610

ENCODER COUPLING  
DIA- 30 M.M.  
HOLE 6 X 10M.M.



## GD-108

IMERSSION ROLL BRACKET  
MAT. S.S.316



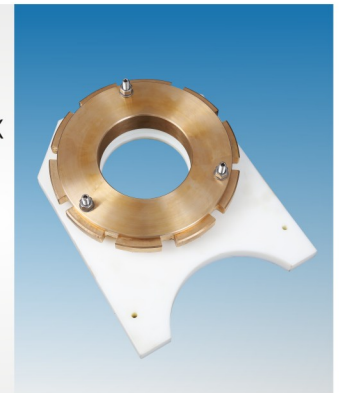
## GD-109

STUFFING BOX FOR  
SQUEEZE ROLL  
MAT. PA6C- MADE IN  
GERMANY



## GD-109/AA

COMPLETE STUFFING BOX  
FOR SQUEEZE ROL  
( 03 PARTS ASSY.)  
MAT. PA6C- MADE IN  
GERMANY  
& PHOSPHOROUS  
BRONZE-2





# SPARES FOR BENNINGER SIZING MACHINE

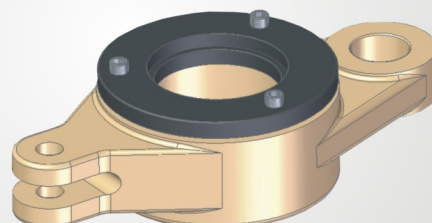
## GD-009/B

FINAL SQUEEZE ROLL BEARING  
PEDESTAL WITH COVER



## GD-009/S

FIRST SQUEEZE ROLL BEARING  
PEDESTAL WITH COVER



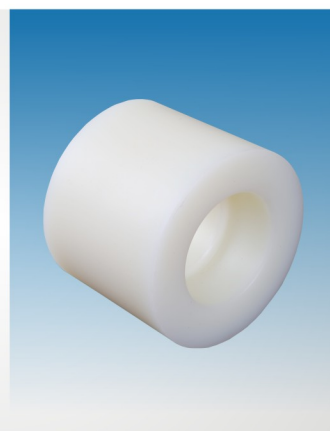
## GD-110

SERRATED CONE ( CHUCK)  
50 TEETH



## GD-111

CONICAL ROLLER  
FOR PRESS ROLL CARRIER  
MAT. PA6C  
MADE IN GERMANY



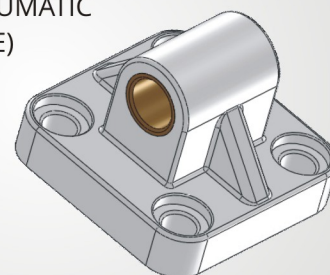
## GD-112

CYLINDRICAL ROLLER  
( FOR PRESS ROLL CARRIER)  
MAT. PA6C  
MADE IN GERMANY



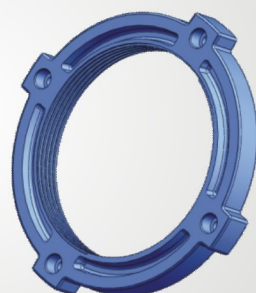
## GD-113

SARVEL FLANGE (PNEUMATIC  
CYLINDER BASE PLATE)



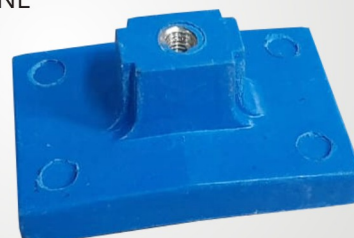
## GD-115

ALUMINIUM FLANGE  
SHUTTER FOR PILE BEAM



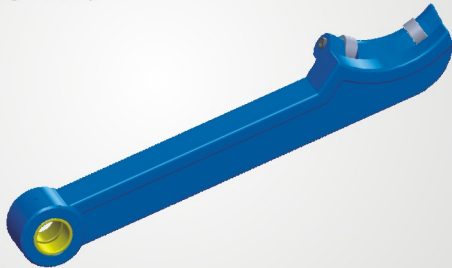
## GD-116

BRAKE LINER FOR  
UNWINDING MACHINE



## GD-117/LH - GD-117/RH

BEAM LIFTING ARM.



## GD-117/A

STEEL CORE WIRE ROPE  
FOR BEAM LIFTING ARM  
12 M.M. ADAPTOR THREAD,  
06 M.M. WIRE DIA  
APRO. LENGHT 1110 M.M.  
( USHA MARTIN MAKE)



## GD-117/AA

STEEL CORE WIRE ROPE  
FOR BEAM LFTING ARM  
16 M.M. ADAPTOR THREAD,  
08 M.M. WIRE DIA  
( USHA MARTIN MAKE)



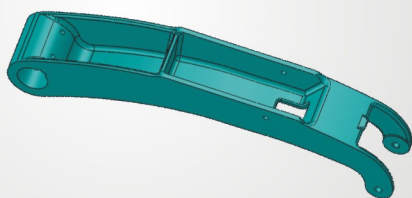
## GD-118

CONICAL SUPPORT FOR  
PRESS ROLL CARRIER  
MAT. PA6C  
MADE IN GERMANY



## GD-119

PRESSING ARM  
FOR PRESS ROLL



## GD-120

PRESS ROLL BUSH MAT. FIBRE  
FILLED HYLAM / P. T. F. E.,  
POM-C



## GD-121

PRESS ROLL SPRING



## GD-122

HANDLE FOR SIZING  
MACHINE CREEL  
MAT. ALUMINIUM



# SPARES FOR BENNINGER SIZING MACHINE

## GD-123

SYNTHETIC EBONITE COATED  
ROLL TOP & BOTTOM ROLL



## GD-124

NORGREN MAKE PNEUMATIC  
CYLINDER FOR CREEL



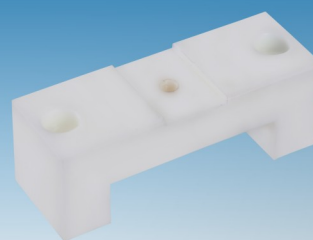
## GD-126

SS 304 OR HARD CHROME  
PLATED PRESS ROLL (80MM DIA)



## GD-127

NYLON BRACKET FOR  
PRESS ROLL CARRIER  
MAT. PA6C-  
MADE IN GERMANY



## GD-128

ADJSUTABLE SIZE LEVEL STUD  
MAT. S.S316



## GD-113

BEAM SUPPORT BRACKET  
FOR SIZING MACHINE CREEL  
MAT. S.G. IRON



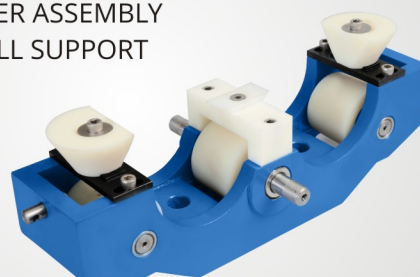
## GD-149-A

LEASE ROD STAND  
MAT. S.G. IRON



## GD-150

ROLLER CARRIER ASSEMBLY  
FOR PRESS ROLL SUPPORT





## GD-501

WET SPLITTING  
ASSEMBLY,  
MOTOR GEAR BOX  
MOUNTING WITH  
PTFE COATED  
LEASE ROD



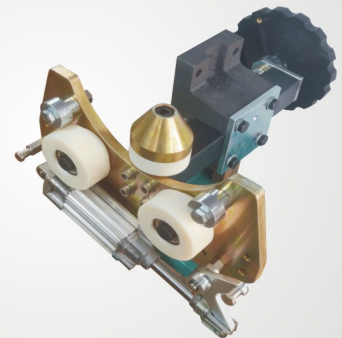
## GD-502/L.H. / GD-502/R.H.

ROTARY JOINT  
FOR SIZING MACHINE  
MAT. S.S.304  
SIZE- 3/4" BSP THREAD



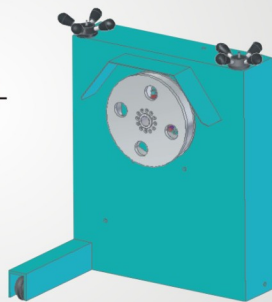
## GD-153/A

BEAM SUPPORT  
ASSEMBLY WITH  
CHUCK FOR SIZING  
MACHINE CREEL



## GD-505

UNWINDER FOR  
SIZING MACHINE  
WITH RAIL & WITHOUT RAIL  
FOR 1000 DIA BEAM



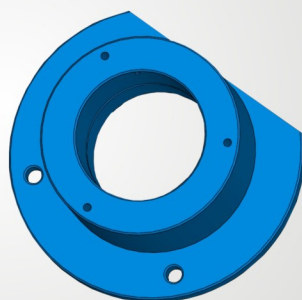
## GD-154

S S 304 LEASE ROD  
ONE SIDE V SHAPE



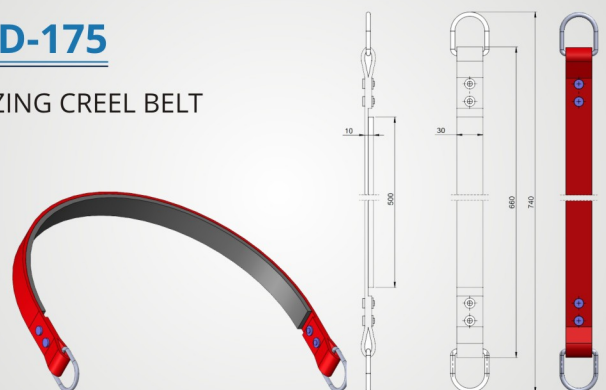
## GD-BEN-0011

PADESTAL  
HOUSING FOR  
BENNINGER  
IZING MACHINE



## GD-175

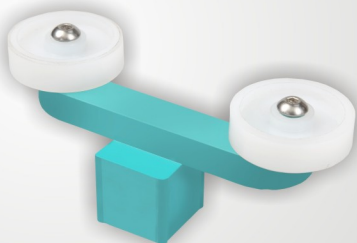
SIZING CREEL BELT



# SPARES FOR DIRECT & SECTIONAL WARPING MACHINE

## GD-130

CREEL GUIDE TOP ROLLER  
(GUIDANCE)



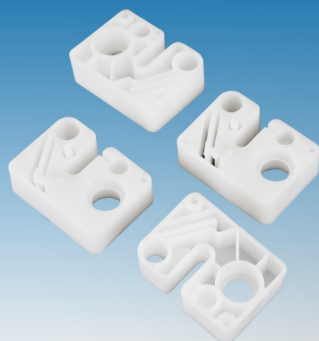
## GD-130-A

CREEL SUPPORT  
ROLLER FOR  
PACKAGE FRAME



## GD-PRO-131

DLERIN CUTTER  
GUIDE FOR  
CUTTER ASSY.  
( KNIFE HOLDER )



## GD-132

CHAIN WHEEL FOR  
CUTTER ASSEMBLY



## GD-133

SHIELD  
COVER BRACKET



## GD-133/A

CENTRE SHAFT



## GD-134

CREEL BAR  
BOTTOM TAG  
(GUIDANCE)



## GD-135

COMB ROLLER FOR  
PRETENSIONER



## GD-136

SERRATED CONE 50 TEETH (CHUCK)



## GD-136/PRA

SERRATED CONE  
50 TEETH (CHUCK)  
FOR PRASHANT  
WARPING MACHINES



## GD-137

ALUMINIUM COUPLING  
WITH SPIDER



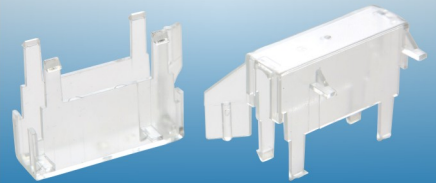
## GD-138

RUBBER STOPPER FOR  
SHILED COVER



## GD-139

CREEL BAR SENSOR COVER TOP



## GD-140

GUIDE ROLLER FOR  
CUTTER CARRIAGE



## GD-140/AA

CHAIN WHEEL FOR  
CUTTER ASSEMBLY



## GD-141

DRIVING DISC



## GD-141/A

CHAIN  
GUIDE ROLLER

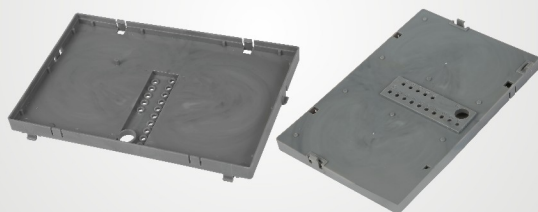




# SPARES FOR DIRECT & SECTIONAL WARPING MACHINE

## GD-0035/W

SECTION MODULE FOR WARPING CREEL



## GD-0036/W

( DIAPHRAGM )PRESSURE  
PLATE FOR  
WARPING MACHINE



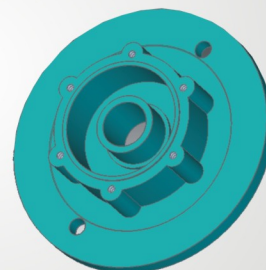
## GD-0037/W

BREAK DISC FOR DIRECT  
WARPING  
MACHINE GUIDE ROLL



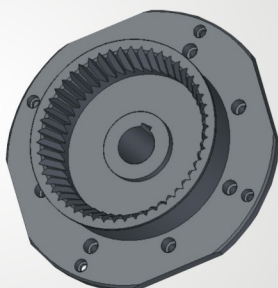
## GD-0038/W

BREAK DISC FOR DIRECT  
WARPING MACHINE



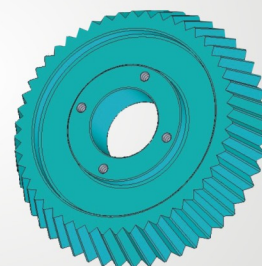
## GD-0039/W

WARPING BEAM  
HUB ADAPTOR



## GD-0040/W

WARPING BEAM ADAPTOR  
WITH OR WITHOUT SHAFT



## GD-180

ARGO HYTOS  
MAKE HYDRAULIC  
PUMP FOR DIRECT  
WARPING MACHINE



# SPARES FOR DIRECT & SECTIONAL WARPING MACHINE

## GD-144

FORK ( CISO ) LEVER



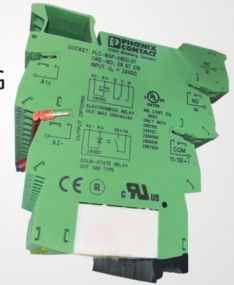
## GD-145

PLATE FOR CREEL  
( CLAMP )



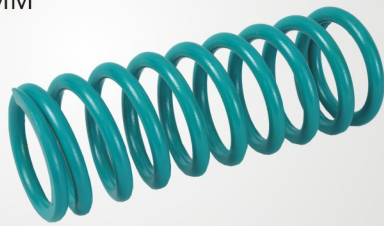
## PLC-BSP-24DC/21

PHOENIX  
CONTACTOR  
FOR WARPING  
MACHINE



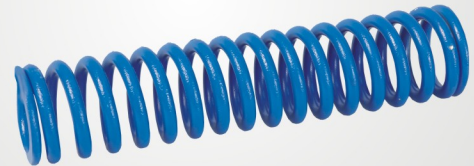
## GD-156

WARPING SCREEN SPRING  
SIZE: 84X64X215 MM



## GD-156/A

WARPING SCREEN SPRING  
SIZE: 50X34X220 MM



## GD-159/A

ID-19.05 X KEAYWAY-6X3  
TOTAL LENGTH-66.00 M.M.



## GD-159/B

ID-19.05 X KEAYWAY-6X3  
TOTAL LENGTH-70.00 M.M.



## GD-159/C

ID14.00X KEYWAY-5X2.50  
TOTAL LENGTH-52 M.M.



## GD-162

BRAKE LINER FOR WARPING MACHINE  
SIZE-90 MM X 76 MM X 17 MM

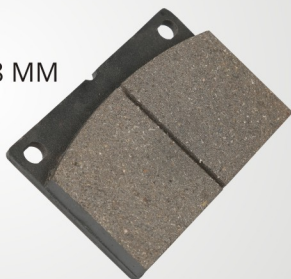




# SPARES FOR DIRECT & SECTIONAL WARPING MACHINE

## GD-162-A

BRAKE LINER FOR  
WARPING MACHINE  
SIZE-118 MM X 83 MM X 18 MM



## GD-163

NYLON GEAR FOR  
WARPING MACHINE



## GD-WACR-0041

CONNECTION  
ANGULAR AIR NOZZLE



## GD-WACR-0042

AIR NOZZLE ( PROFILE )



## GD-WACR-0043

WARP CREEL TOP BAR SUPPORT  
( HEAD PART )



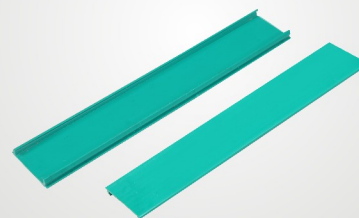
## GD-WACR-0044

TENSION ELEMENTS



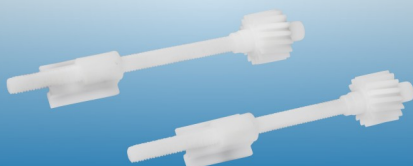
## GD-WACR-0045

STOP MOTION COVER BAR  
( GREEN ) LENGTH-2300 M.M.



## GD-WACR-0046

SPINDLE WITH NUT  
FOR BENNINGER/KARL MAYER  
SECTIONAL WARPING MACHINE



## GD-H CREEL-150-50

H CREEL P.T.F.E. WHEEL  
D-150 W-50



## GD-H CREEL-100-30

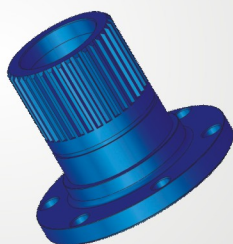
H CREEL P.T.F.E. WHEEL  
D-100 W-30





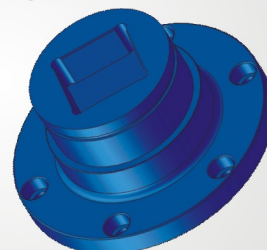
## GD-142

HUB SHAFT (ADAPTOR) FOR  
PICANOL RAPIER LOOM



## GD-143

SQUARE HUB (ADAPTOR) FOR  
PICANOL RAPIER LOOM



## GD-147

SWORD FOR LOOMS



## GD-147/AA

SMALL SWORD FOR  
LOOMS - BA - 309649



## GD-0040/WL

CLOTH ROLL LOCK LEVER SET  
SMALL AND BIG-PICANOL GAMMAX



## L.H. J1100-52150

HOLDER ASSY.YARN BEAM  
L.H. J1100-52150 FOR  
TOYOTA-710 -



## R.H. J1100-51150 FOR

HOLDER ASSY.YARN BEAM  
R.H. J1100-51150 FOR  
TOYOTA-710



## GD-316

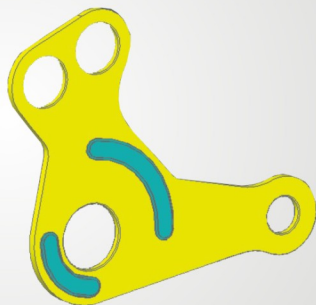
UNDER MOTION  
LEVER-03 HOLES  
WITH PLASTIC  
SUPPORT BOTH SIDE



# SPARES FOR WEAVING LOOMS

## GD-162-A

UNDER MOTION  
LEVER-04 HOLES  
WITH PLASTIC  
SUPPORT BOTH SIDE



## GD-190/A

RACE ADDITION 50 MM  
FOR SULZER  
G 6500 MACHINE



## GD-190/AA

RACE ADDITION 100 MM  
FOR SULZE G 6500 MACHINE



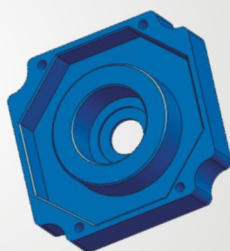
## GD-301

HEAD FRAME  
GUIDE LEFT  
FOR SULZER  
MACHINE



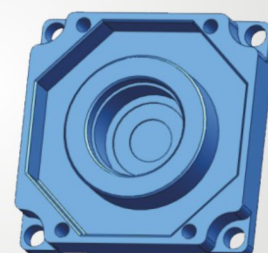
## GD-305

LENO MOTOR COVER  
FRONT FOR VAMATEX



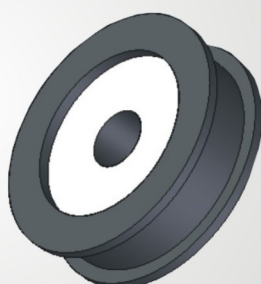
## GD-305/A

LENO MOTOR COVER  
REAR SIDE FOR VAMATEX



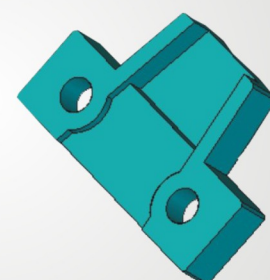
## GD-306

LENO PULLEY  
FOR VAMATEX



## GD-307

LENO SANSOR  
COVER FOR VAMATEX



## GD-308

NYLON TROLLEY WHEEL  
AS PER YOUR SIZE  
MAT PA6C  
MADE IN GERMANY



## GD-310

TAPE GUIDE FEED  
INLET TAPE GUIDE FEED  
INLET FOR SULZER  
G 6500 MACHINE



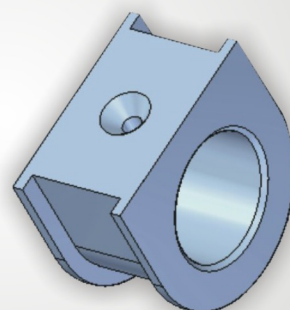
## GD-311

SPLINE BUSH FOR  
VAMATEX LOOMS



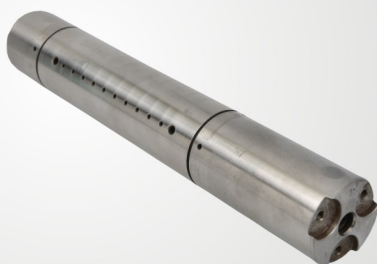
## GD-312

TOP BEAM BACK REST  
WHIP ROLLER  
SUPPORT FOR  
SULZER MACHINE



## F18230905

F18230905 CAM FOLLOWER  
SHAFT FOR  
WEAVING LOOMS



## GD-DRC-3

DRC-3 ELEMENTS FOR HEALD FRAME



## BA-312012

FRAME SUPPORT  
BA312012- PICANOL



## BA-311963

FRAME SUPPORT  
BA-311963- PICANOL

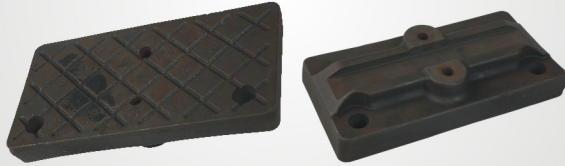




# SPARES FOR WEAVING LOOMS

## GD-WV-FOOT PLATE

FOOT PLATE FOR WEAVING LOOM  
HEIGHT ADJSUTMENT



## GD-315-05

UNDER MOTION LEVER -05  
HOLES WITH PLASTIC  
SUPPORT BOTH SIDES



## GD-315/AA

PLASTIC SUPPORT FOR  
UNDER MOTION LEVERS



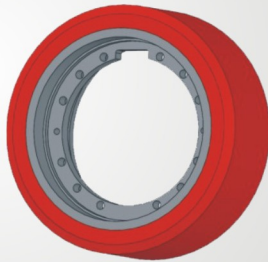
## GD-385

RADIUS GRROVE PULLEY FOR  
DEMAG CRANES



## GD-GEN-CENTRE-001

GENKINGER TROLLEY WHEEL  
(CENTER)



## GD-GEN-SIDE-002

GENKINGER TROLLEY WHEEL  
(SIDE)



## IRON BE-300513/ BE-300513

FOR PICANOL OMNIPLUS





**Arvind Limited**



**Alok Industries Ltd.**



**Welspun India Ltd.**



**Himatsingka Linens**

**Rithik Sizing Mill P. Ltd.**



**Baldev Textile Mills Pvt. Ltd.**



**Indo Count Industries Ltd.**



**Deesan Texfab P. Ltd.**



**Shri Ram Krishna (Jhanwar)  
Texfab Pvt. Ltd.**



**Premier Fine Linens P. Ltd.**





📍 79, Mahadev Estate, Part-II, Cellulose Mill Compound, Ramol Road, C.T.M., Ahmedabad 382449, Gujarat (India).  
📞 Mob. +91 98259 00675 / +91 98980 01250 | 📧 Email : gajjardiecast@yahoo.com • paresh@gajjardiecast.com  
🌐 [www.gajjardiecast.com](http://www.gajjardiecast.com)

SCAN THIS QR CODE  
FOR MASTER BROCHURE



SCAN QR CODE  
FOR MORE DETAILS

